

APPLICATIONS

If there are two in an apartment, one resident must qualify to be the head of household, or the spouse /significant other must be at least 62 years old or over 18 with special needs (10% designated for disabled).

Individual rents are based on each resident's annual adjusted income established by the Federal Government. We make additional adjustments to reflect changes in median family income in Duval County. HUD subsidies may be available for qualified applicants.

**Please note: Due to the high volume, all residential applications are placed on our waiting list. Therefore, unit availability is assigned according to the date the application is received and based on preferences. Also, employees are not licensed or trained to offer meal service or physical or medical care.*

Pablo Hamlet does not discriminate against anyone because of race, color, religion, sex, handicap, familial status, or national origin.

AMENITIES

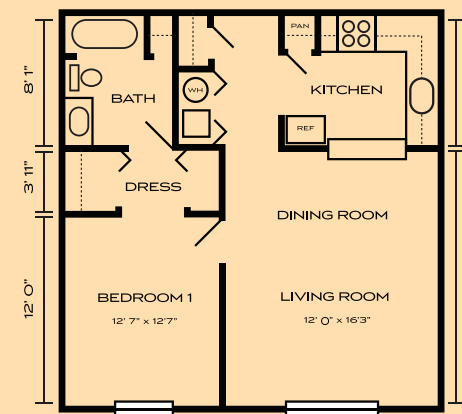
Upgraded and expanded, Pablo Hamlet includes 50 brand new units and features a quiet setting with walking trails, a pond, and nature park landscaping. We're close to beaches, shopping, churches, world-class medical facilities, and the beautiful Atlantic Ocean.

Amenities include:

- 50 brand new, ready-to-move-in modern units
- Spacious one & two bedroom apartments
- Granite countertops in new units
- All-electric kitchen
(catering available through Pablo Towers)
- Ample closet space, cable TV & phone ready
- Elevator (each building) & laundry facilities (each floor)
- Utility allowance & individually-controlled heat & A/C
- Emergency call system
- Multi-purpose community center with kitchen
- Business center, computer room, library, beauty shop
- Expanding space for resident-sponsored social events & classes
- Service coordinator
(Identifies/connects residents to services)
- Convenient & well-lit parking
- 24-hour emergency maintenance
- Scheduled Dial-A-Ride transport

FLOOR PLANS

ONE BEDROOM 592 sq. ft.

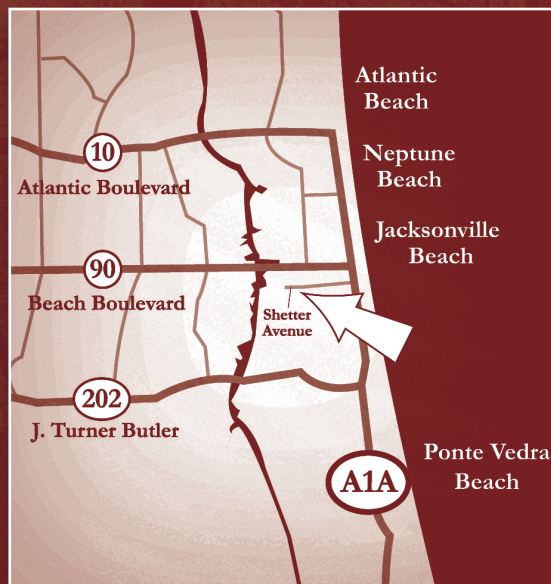




A HIDDEN GEM

We're proud to provide quality, affordable elderly housing in a lovely environment and a compassionate residential apartment atmosphere for our residents.

We're tucked away in a natural maritime habitat and welcome inquiries. Residents enjoy their neighbors and our beautiful, pristine environment. We look forward to speaking with you.



1600 Shetter Avenue
Jacksonville Beach, FL 32250

P. 904.241.5207 | F. 904.241.0007
TDD: 1.800.955.8771

www.pablohamlet.com

A Smoke-free Environment

Managed by Elderly Housing Management Corp., Inc.



PABLO HAMLET

**INDEPENDENT SENIOR LIVING
QUIETLY NESTLED IN MOTHER NATURE
JUST EAST OF THE INTRACOASTAL WATERWAY**

Serving the Jacksonville Beaches for more than 20 years,
we've expanded to meet the needs of our communities.