

AMENITIES

- Smoke free building
 - Spacious one and two bedroom apartments
 - Individually controlled heat and air conditioning
 - All-electrical kitchens
 - Ample closet space
 - Cable TV and telephone ready
 - Laundry facilities on each floor
 - Elevator in each building
 - Convenient, well lit parking
 - Resident utility allowance
 - Emergency call systems
 - 24 hour emergency maintenance
 - Scheduled Dial-a-Ride transportation
 - Quiet, parklike setting with walking trails
 - Resident sponsored social events and classes
 - Service Coordinator to help identify local services for residents
 - Close to shopping, churches, medical facilities and the beach
- Pablo Hamlet does not discriminate against any person because of race, color, religion, sex, handicap, familial status or national origin.**

ELIGIBILITY, COSTS & APPLICATIONS

To qualify for an apartment at Pablo Hamlet, the head of household or spouse must be at least 62 years of age or must be over the age of 18 and disabled. Ten percent of our units are set aside for the disabled. Pablo Hamlet allows no more than two residents to occupy a bedroom.



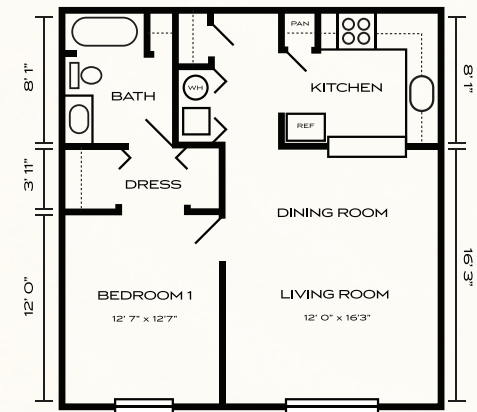
Individual rents are based on each resident's annual adjusted income (which must be within the limitations established by the Federal Government) and will be subsidized through the Housing Assistance Payment program. Additional adjustments will be made to reflect the changes in median family income of Duval County, as well as to cover provable medical expenses and other allowances.

Pablo Hamlet employees are neither licensed nor trained to give meal service, physical or medical care.

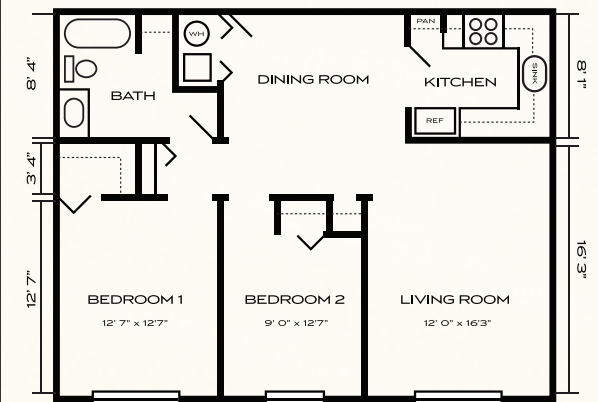
Due to high volume, ALL applications for residency will be placed on a waiting list and open units will be assigned based on listed preferences and date the application was received.

FLOOR PLANS

ONE BEDROOM
592 SQ. FT.



TWO BEDROOM
789 SQ. FT.





Since 2002, **Pablo Hamlet** in Jacksonville Beach has provided quality, affordable housing in a compassionate atmosphere for lower income senior citizens.



PABLO
HAMLET

1600 Shetter Avenue
Jacksonville Beach, FL 32250

Phone: 904.241.5207
Fax: 904.241.0007
TDD: 1.800.955.8771

www.pablohamlet.com



Pablo Hamlet is owned by the Beaches Elderly Housing Corps., a non-profit corporation supported by local churches, and managed by the Elderly Housing Management Corporation, a not for profit management agency.



PABLO
HAMLET

MEETING THE HOUSING NEEDS
OF OUR SENIOR CITIZENS